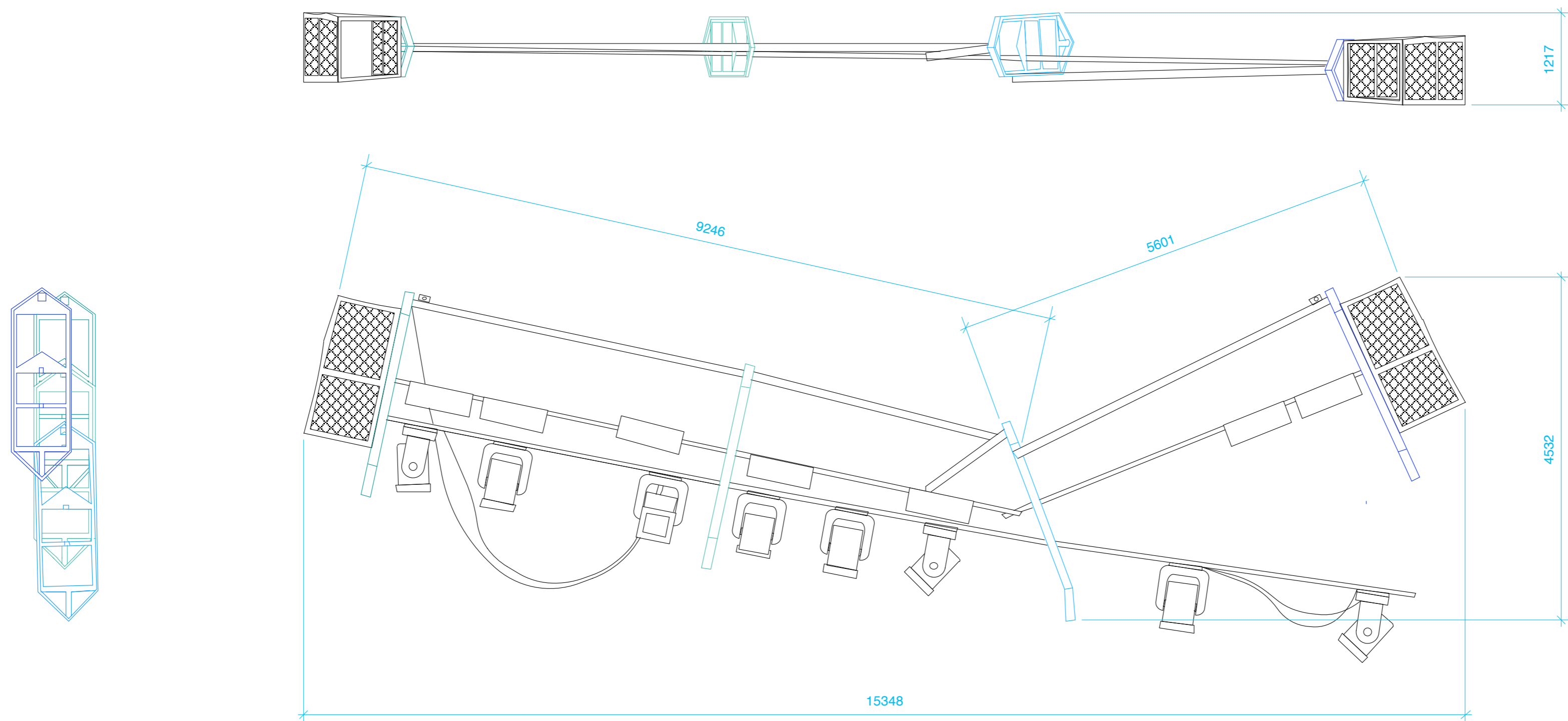


THIS DRAWING REPRESENTS VISUAL CONCEPTS AND CONSTRUCTION SUGGESTIONS ONLY. ALL MEASUREMENTS SHOULD BE VERIFIED ON SITE. THE DESIGNER WILL NOT ACCEPT LIABILITY FOR ANY ACTION RESULTING FROM THIS DRAWING, HOWEVER CAUSED. THE ENGINEER MUST ENSURE THAT ALL PROPOSALS ARE SOUND, CORRECT ANY ERRORS AND ADVISE OF ANY CHANGES HE/SHE MAKES. ALL MATERIALS AND CONSTRUCTION MUST COMPLY WITH NECESSARY LOCAL FIRE AND SAFETY CODES.



TEATRO MASSIMO
<b>"THE RING CYCLE - SIEGFRIED &amp; GÖTTERDÄMMERUNG "</b>
BROKEN LIGHTING BRIDGE
DIRECTOR: GRAHAM VICK
DESIGNER: RICHARD HUDSON
DRAWN BY: KASPER HANSEN
SCALE: 1:50 on A2      DATE 08/04/13